



COMMUNITY POT

NSC NUTRITION
SUPPORT
CENTRE

... March Monthly
Report

Powered by Wholeeats





Introduction

This report provides a comprehensive update on the program activities, impact, and product distribution for March. The report highlights key interventions undertaken within communities and healthcare facilities to address malnutrition and improve nutrition outcomes.



Program Activities Report

Monitoring and Evaluation (Follow-up)

- We conducted follow-up sessions with onboarded beneficiaries in the community.
- We provided nutrition assessment and necessary nutrition supplements to beneficiaries.

Primary Health Care Center Visits

- The team delivered nutrition education and assessment services to children present at immunisation clinics.
- We also identified malnourished children and provided referral cards for further evaluation and enrollment at the Nutrition Support Center (NSC).

Hospital Activation

- Initiated hospital-based nutrition programming.
- Conducted assessments and onboarded the first set of beneficiaries in hospital facilities.

Preventive Program

- Conducted nutrition education sessions in hospitals for caregivers of children aged 0-9 months.
- Addressed key topics such as weaning education and complementary feeding.

Behavioral Change Campaign

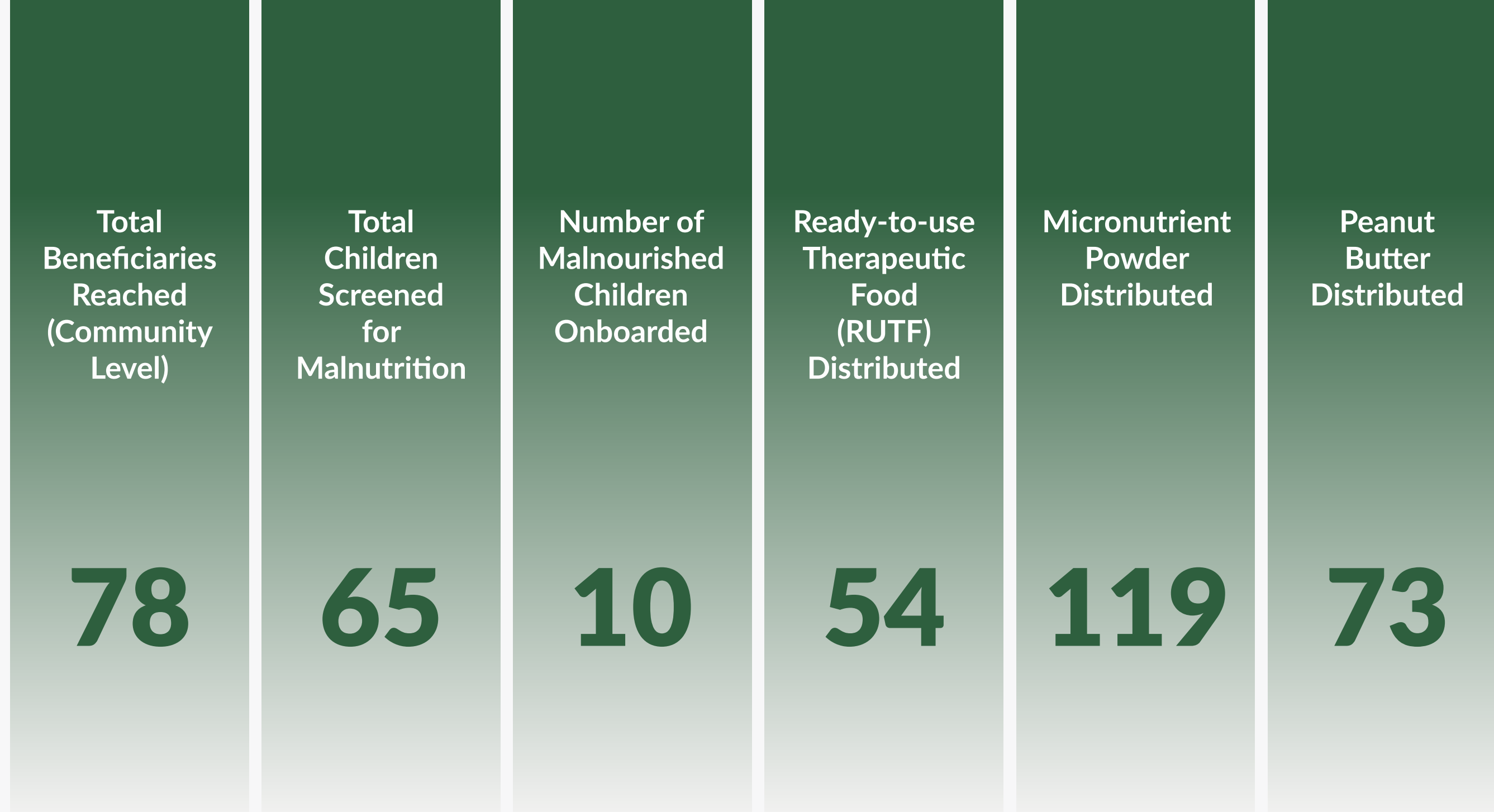
- Implemented nutrition support messaging in the form of SMS reminders.
- Encouraged adherence to nutrition education and best practices among caregivers.



COMMUNITY POT

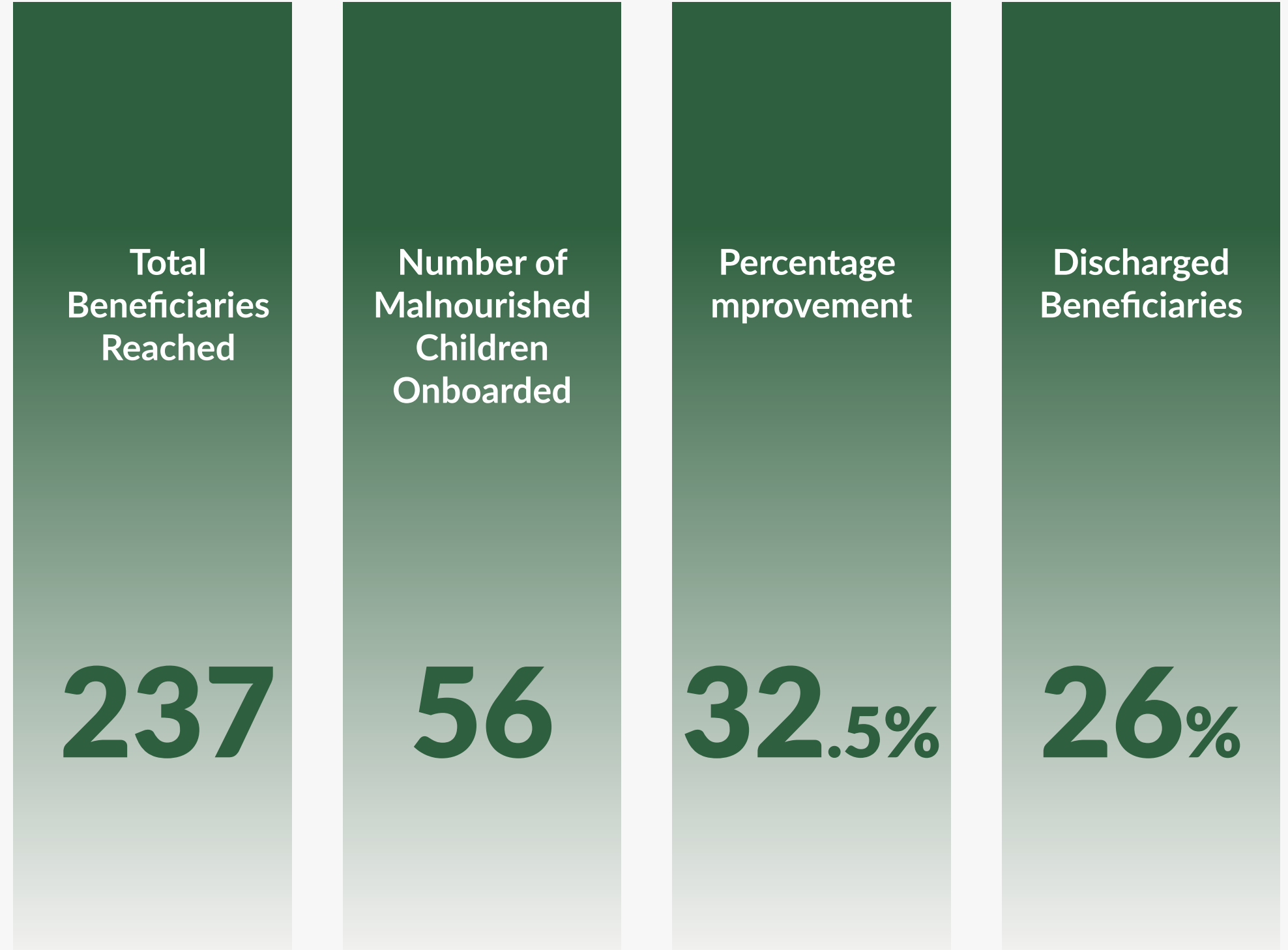


Impact Report



Community and Hospital Impact





Cumulative Impact Report

(February - March)





COMMUNITY POT



Progress Narrative

Progress Narrative

Hamzat, a 17 month old moderately malnourished boy was onboarded on the NSC program in February with a weight of 7kg and MUAC of 12.5cm. His mother noted that he was always falling sick and felt tired often. After a series of counselling by the NSC team, he was provided with supplements to aid his recovery. His mother was also counselled extensively on adequate hygiene practices.



Progress Narrative

We are pleased to report progress seen in Hamzat. His weight has increased by 0.7kg in one month. He is more active and is meeting his milestones effectively. His dietary intake has also improved; his meals are more diverse and his mother incorporates foods from all food groups in his diet. that sessions are convenient for them will also help improve attendance rates.



Challenges

Low turnout of onboarded beneficiaries for follow-up sessions at the community level. Many beneficiaries did not return for scheduled follow-up sessions, leading to difficulties monitoring their progress and ensuring adherence to nutritional treatment. The reasons for this low turnout include lack of awareness of the importance of follow-ups, logistical challenges caregivers face, and competing priorities within households.

Next Steps

- Expand program outreach to three new communities.
- Conduct community outreaches to identify, assess, and onboard beneficiaries in newly targeted communities.

Next Steps

- Organise nutrition education sessions in healthcare facilities.
- Continue providing nutrition support at both the community level and healthcare facilities.



COMMUNITY POT





COMMUNITY POT





COMMUNITY POT

Get in touch

For further inquiries or collaboration,
please contact

   - @communitypot

 - +234 809 500 0096

 - www.communitypots.com

